

A Day in Haworth and Keighley

Spent an eventful day in Haworth and Keighley, following the footsteps of the Brontës, exploring historic sites and enjoying some fantastic food and shopping.

Morning

Arrive in Haworth in style by taking the **KWR Steam Train** from Keighley. The heritage railway passes through beautiful Worth Valley countryside and offers a rare chance to experience history. From the railway station you can take a short cut through **Central Park** to reach **Haworth Main Street**. Head to the top of the street, where you will find **The Brontë Parsonage**, the Brontës former home which is now an excellent museum.



Head back down the Main Street there are plenty of places to pick up a quirky souvenir or handmade gift, with dozens of quality independent shops including **Hawksbys**, **Wave of Nostalgia** and **Pretty Penny**. Pick from one of the many fantastic cafés, bistros and cosy pubs on **Haworth Main Street** and enjoy a laid back lunch whilst admiring the valley. Perhaps even try your hand at a Brontë inspired poem or revisit their classic literature in the surroundings that inspired them.

Lunch



Afternoon

Give yourself a good 2-3 hours to explore the landscapes that inspired the Brontës. Beginning near **St. Michael and All Angels' Church**, walk up to the Brontë waterfalls then further up the moorlands to **Top Withens**, the supposed setting of **Wuthering Heights**. Head back towards **Keighley**, and pay a visit to the historic **East Riddlesden Hall (National Trust)** and **Cliffe Castle Museum** and gardens.

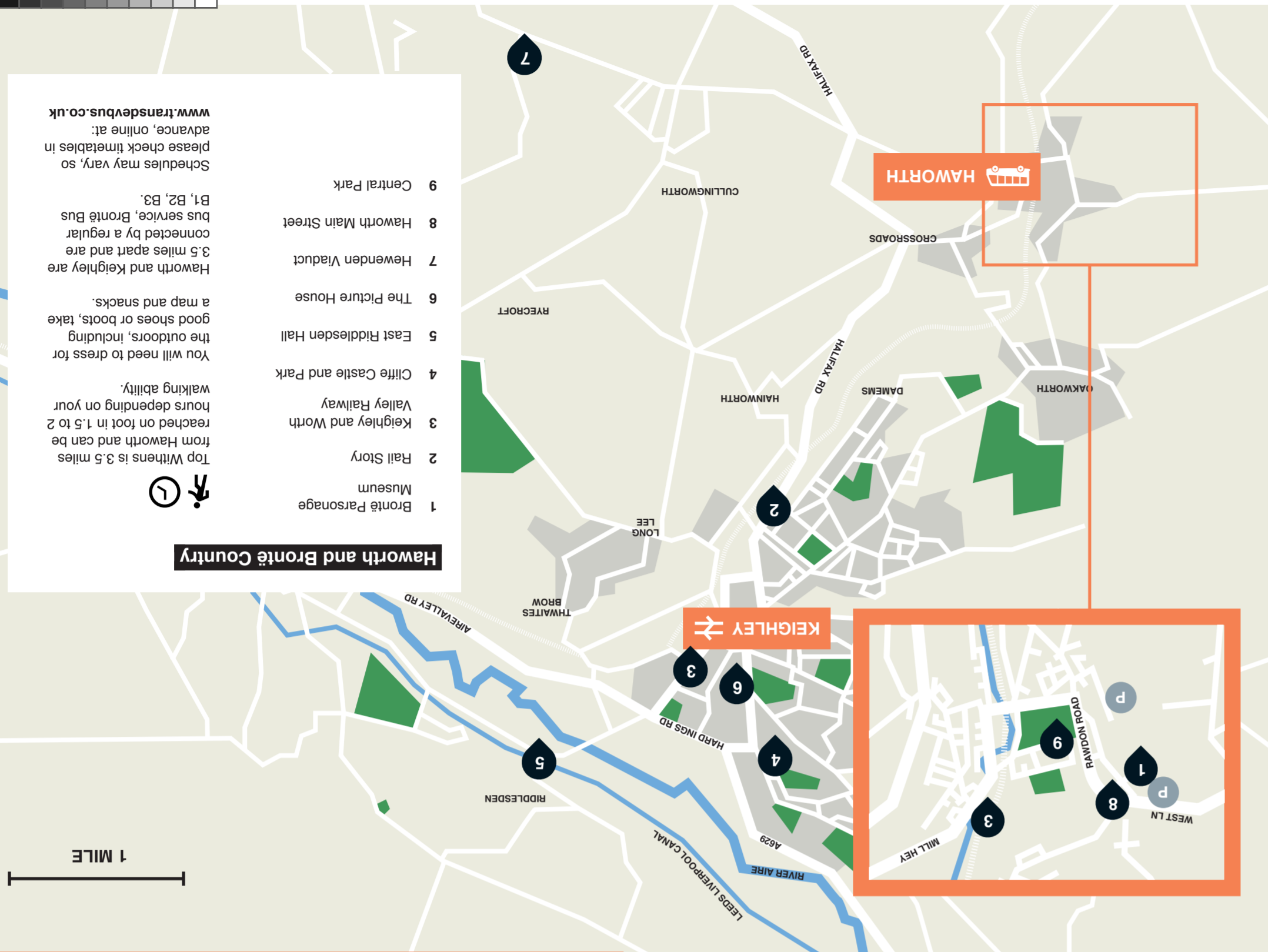
There are lots of places to enjoy an evening out in **Keighley**. Pay a visit to **The Lord Rodney**, one of Keighley's oldest pubs, where you can enjoy a pint of local brew **Timothy Taylor's Landlord**. For fans of curry the award-winning **Shima Spice** is one of the best restaurants in the district or alternatively give **Amici Ristorante** or **Santoni Osteria** a try for top Italian food.

Evening



Checklist

- Ride the Keighley & Worth Valley Railway
- Take a hike to Top Withens
- Visit Mrs Beighn's traditional sweet shop
- Browse and shop at Cabinet of Curiosities
- Relax at Haworth Central Park
- Write your own Brontë inspired poem
- Visit the glasshouse at Cliffe Castle
- Try a Timothy Taylor's 'Landlord'
- Cycle along the Great Northern Trail



Haworth and Brontë Country

- 1 Brontë Parsonage Museum
- 2 Rail Story
- 3 Keighley and Worth Valley Railway
- 4 Cliffe Castle and Park
- 5 East Riddlesden Hall
- 6 The Picture House
- 7 Hewenden Viaduct
- 8 Haworth Main Street
- 9 Central Park

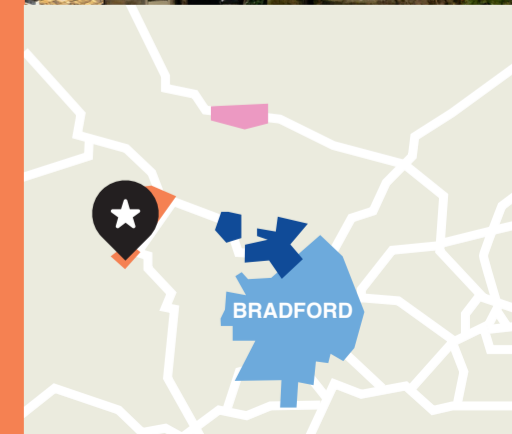
Top Withens is 3.5 miles from Haworth and can be reached on foot in 1.5 to 2 hours depending on your walking ability. You will need to dress for the outdoors, including good shoes or boots, take a map and snacks. Haworth and Keighley are 3.5 miles apart and are connected by a regular bus service. Brontë Bus B1, B2, B3. Schedules may vary, so please check timetables in advance, online at: www.transdevbus.co.uk



- VISIT FOR**
- Brontë connections
 - Iconic Main Street
 - Inspiring landscapes
 - Quirky museums

ABOUT Haworth & Brontë Country

Home of the famous Brontë sisters, Haworth attracts visitors from all around the world to take in the sites that inspired their famous works. With its historic cobbled Main Street, historic parsonage and epic rolling moors, the picturesque village of Haworth has a very special vintage charm that has made it a popular visitor attraction for many years. As well as its literary significance, Haworth is also making a name for itself as a haven for independent businesses.



Discover **Haworth and Brontë Country**

www.visitbrontecountry.com

Getting to Haworth

Bus

Regular bus services run to Haworth from Keighley and Hebden Bridge, with connections in Keighley to Bradford Interchange. Plan a journey: www.wymetro.com

Parking

There are three main car parks in Haworth, all pay and display. The nearest is on West Lane adjacent to the Museum. This also has public WCs. A large car park with facilities for coaches (Brontë Village Coach and Car Park) is accessible from Sun Street.

Electric vehicle charging points are located across the district, find out more at drivers.geniepoint.co.uk

Rail

The nearest mainline station is Keighley with connections to Bradford, Leeds and Skipton. The Keighley and Worth Valley Railway runs steam trains between Keighley railway station and Haworth railway station at weekends, bank holidays and daily in summer.

Visitor Information

Contact us for more information to help plan your visit including accommodation and special events. Tel: 01274 433678 Email: bradford.vic@bradford.gov.uk Website: www.visitbrontecountry.com

Follow us @VisitBradford



Bradford is UK City of Culture 2025 #Bradford2025 bradford2025.co.uk



The wording in this publication can be made available in other formats such as large print and Braille. Please call: 01274 433678

History

On the edge of the Pennines, the Haworth known by the Brontës was a working village, producing worsted yarn and cloth. However the village was soon to become a site of literary pilgrimage, the Brontë Society was founded in 1893 and visitors have made their way to this iconic location ever since.



Literary Landscape

Haworth is a popular destination for walkers with some stunning scenery and historic walks. Away from the village itself you have the rugged and breathtaking Pennine countryside. You can undertake the Brontë Way, a way marked trail linking the key locations associated with the Brontë family, or try some of the shorter walks starting out from Haworth. Take time to explore the quiet network of country roads and paths across the brooding moorland.

CLOSE BY

Keighley

Nearby Keighley has a plenty of attractions and is well worth a stop off on your visit to Haworth. Look out for the Keighley & Worth Valley Railway, Cliffe Castle Museum and Park, National Trust property East Riddlesden Hall and Rail Story at Ingrow. There are also plenty of opportunities to shop in Keighley and the popular Cavendish Street is a good place to start for local independent shops. The Airedale Shopping Centre also has lots to offer with its high street names.

Haworth & Brontë Country



Haworth sits in the Worth Valley surrounded by dramatic moorlands. The village is most famous for being the place which inspired the Brontë sisters to write their world famous novels. The Brontës wrote whilst living at the Parsonage when their father was the parson at the church of St Michael and All Angels. During your stay you can explore the cobbled streets and take in the romantic Brontë heritage which surrounds you.

Not only can you visit the Parsonage and Church, but a short walk from the village you will find the inspirational moors which are said to be the setting for Wuthering Heights and Jane Eyre.

Haworth is a fascinating and individual village, which is centred around the steep cobbled Main Street. There are a number of quirky shops scattered up and down Main Street amongst the cafes, pubs and restaurants and it is the backdrop for a number of events throughout the year.

Shopping

Haworth offers a memorable shopping experience with a fine array of independent shops lining the steeply cobbled **Main Street**. There you can pick up everything from vintage clothing and jewellery, specialist books, heritage souvenirs, original art and traditional sweets.

Be sure to also check out the **Cabinet of Curiosities, Hawksbys Gallery and Modo & Co.**

In Keighley, **The Airedale Shopping Centre** is home to a number of high street retailers while **Cavendish Street and The Royal Arcade** are the place to go for boutique businesses including the excellent **Aire Valley Guitars and Blue Ginger Boutique.**



DID YOU KNOW?

Haworth is the world's first Fairtrade Village and Bradford district is now a Fairtrade Zone.



Brontë Parsonage Museum

Set between the unique village of Haworth, and the wild moorland beyond, this elegant Georgian house was home to Charlotte, Emily and Anne Brontë from 1820 to 1861. The house still retains the atmosphere of the Brontës' time with the rooms they once used filled with their furniture, clothes and personal possessions.

Church Street, Haworth BD22 8DR
tel: 01535 642323
www.bronte.org.uk



Rail Story

Located at Ingrow Station, explore The Carriage Works and their collection of beautifully restored railway carriages, many of which have been used in TV and film productions. Next door, The Engine Shed provides an insight into the history of steam locomotives.

South Street, Ingrow, Keighley, BD21 5AX
www.railstory.co.uk

Keighley and Worth Valley Railway

The KWVR heritage railway runs from Keighley to Oxenhope through beautiful Brontë Country. Board a vintage steam train and enjoy a five mile journey steeped in industrial heritage and the beautiful countryside immortalised by the Brontë sisters.

The Railway Station, Station Road, Haworth, Keighley, BD22 8NJ
tel: 01535 645214 www.kwvr.co.uk



Keighley



The Picture House

Opened in 1912, The Picture House in Keighley offers a more vintage cinema experience with a main downstairs auditorium seating about 300 and a smaller upstairs auditorium that seats about 90.

132 North St, Keighley, BD21 3AF
tel: 01535 602561
www.keighley.nm-cinemas.co.uk

East Riddlesden Hall

A National Trust owned 17th century manor house containing a mixture of 17th - 19th century furniture. The intimate gardens include lots of natural play areas for families to enjoy.

Bradford Road, Riddlesden, Keighley, BD20 5EL
tel: 01535 607075
www.nationaltrust.org.uk



What's On?

From live music, to theatres, arts and festivals
www.visitbradford.com



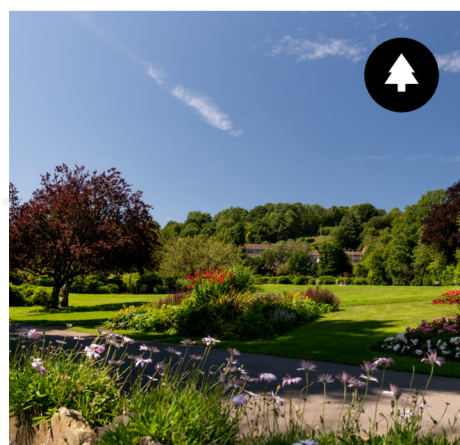
Top Withens

Top Withens is a ruined farmhouse near Haworth, which is said to have been the inspiration for Wuthering Heights, the novel by Emily Brontë. The ruin lies on the Pennine Way and is a popular walking destination from Haworth and Stanbury. Such is the attraction to Japanese literary tourists that some footpath signs in the area include directions in Japanese.

Hebden Bridge, HX7 7AX

TOP TIP

Haworth to Top Withens is a 6.5 mile circular walk, so it's best enjoyed as a full day's activity in some comfortable boots!



Central Park

Haworth's Central Park is the perfect place to relax or go for a stroll. It's pretty flower garden, play area and bowls are popular with locals and visitors, while the recently refurbished bandstand hosts occasional live performances. The park has held the coveted Green Flag award since 2006.

Haworth, Keighley, BD22 8RA
www.bradforddistrictparks.org

Food & Drink

Haworth has an amazing selection of places to eat and drink, from old coaching inns such as the **Haworth Old Hall** and **Black Bull**, to more contemporary **The Hawthorn** or **Haworth Steam Brewery**.

In the area, enjoy cocktails and pub cuisine at **Treehouse Bar & Kitchen**, or try coffee with a twist at **Industry Barista**.

On Main Street, you'll discover Haworth's independent pie maker **Hunter's of Haworth**, as well as charcuterie and bistro **Pavé**. There are also a number of delightful cafes and tearooms, such as **10 The Coffee House** and **Villette Coffee House** and Bakery named after Charlotte Brontë's classic novel. **Cobbles and Clay**, a café and ceramic painting studio, is a great place for the whole family to have fun.

Award-winning curries and a wide choice of cuisines from around the world are just a few of the gastronomic delights in Keighley. Try the **Pullman Dining Experience** on the **Keighley and Worth Valley Railway** if you're searching for a special treat. Travel through the magnificent countryside while a delicious four course meal is served.



Thornton

The village is known as the birthplace of the Brontë sisters. A plaque commemorates their former home on Market Street, and St James' Church holds copies of the Brontës baptism records.

Thornton, Bradford BD13 3HF

Thornton Viaduct

Thornton Viaduct, is grade II listed structure, dating from 1878. It has a remarkable S-shaped curve that stretches for 275 metres and provides breathtaking views of the valley. From the Great Northern Trail, you may easily enjoy the National Cycle Route 69.



South Square Centre

South Square is a community arts centre featuring studio spaces for a variety of artists, as well as a gallery, archive, fine art framers, The Watchmaker bar, and Plenty At The Square cafe, housed in a cluster of 19th century workers cottages. The centre hosts a variety of community events and activities for people of all ages, as well as a workshop programme.

South Square, Thornton, BD13 3LD
tel: 01274 834747
www.southsquarecentre.co.uk



Cliffe Castle Museum

Set within a grand public park, this former mansion house is now a large museum with a wide variety of displays. These include Victorian rooms and furniture, paintings and decorative art. Special galleries deal with natural history, archaeology and social history.

Spring Gardens Lane, Keighley, BD20 6LH
tel: 01535 618231
www.bradfordmuseums.org



Cliffe Castle Park

Green Flag Award **Yorkshire in Bloom Platinum**
Green Heritage Site Accreditation

The recently restored Cliffe Castle Park is well worth exploring with plenty to see including marble fountains, a pond, ornamental Victorian rockwork, glasshouses and terraces and a very popular children's play area. A number of original park features have been recreated including the glasshouse and vineries. There's also a new aviary and small animal house.

Spring Gardens Lane, Keighley, BD20 6LH
www.bradforddistrictparks.org

